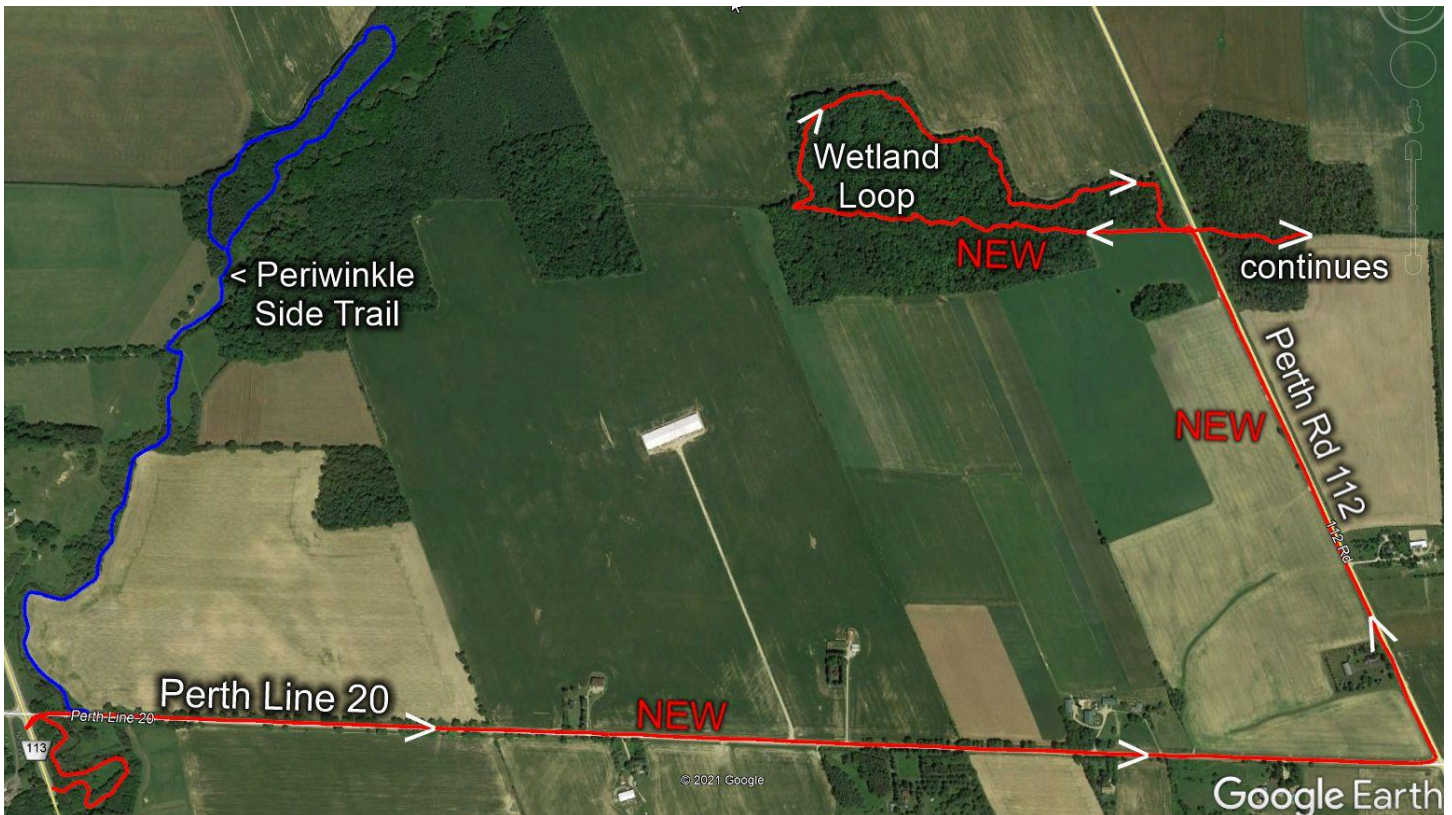


These two trail changes begin at approximately [43.297690, -80.972600](#) on Line 20. The main trail (red) proceeds east on Line 20 and then north along Rd 112 to approximately [43.306160, -80.945920](#). The main trail then turns left (west) and follows the **new** Wetland Loop. The Wetland Loop adds approximately 2.0 km. Returning to Rd 112, the main trail crosses the road and continues east to Rd 111.

Also at [43.297690, -80.972600](#) on Line 20, there is the Periwinkle Side Trail loop (blue blazes) as depicted in the satellite image below. It follows a portion of Trout Creek and is a total of about 3.8 km.



Online maps

Updated Avon Trail maps are available online on the Ondago app. Simply download the Ondago app, select the Avon Trail maps from the catalogue and download the map you need. Online maps are interactive and show your progress as you walk along the trail. Once a map is downloaded, you do not require a data connection while walking the trail.