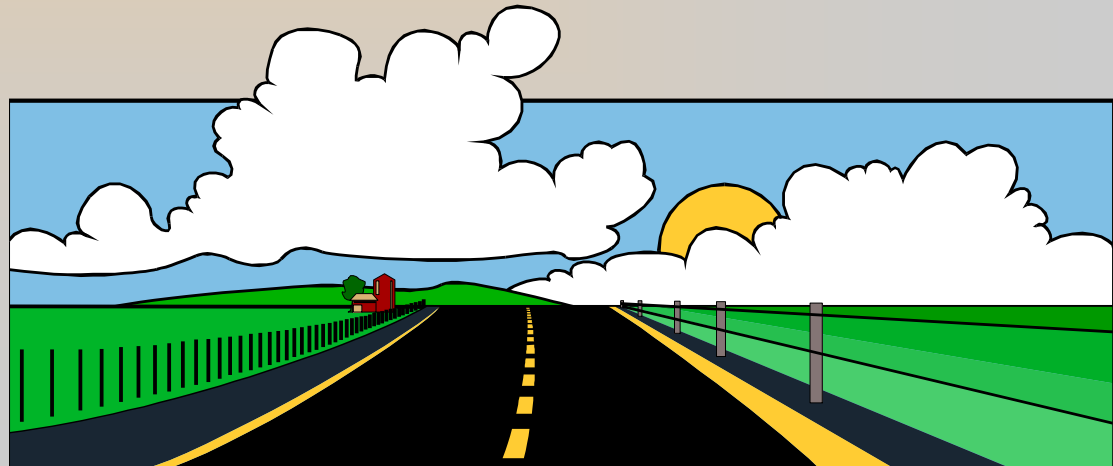




ADOPT -A- HIGHWAY

TRAINING SESSION

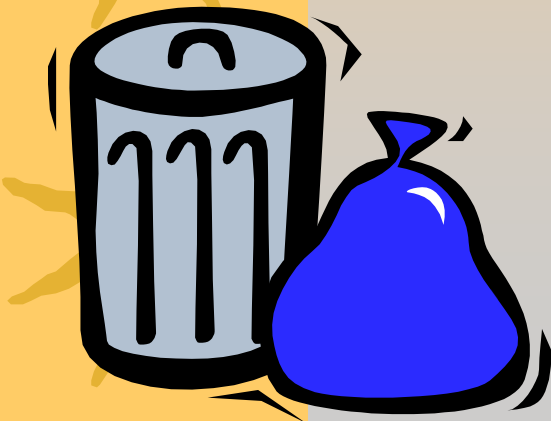




ADOPT-A-HIGHWAY

Why do I need training to pick up garbage?

There are several answers to that question.....





LIABILITY

- ★ The Ministry of Transportation must provide training to groups working on the right-of-way to prevent injury to participants.





HAZARDS

★ There are safety hazards not encountered in everyday living---traffic.





ADOPT-A-HIGHWAY PROGRAM

MTO has endorsed this program as it fosters a working partnership between government and private groups/citizens. Budget restraints have all but eliminated staff available for litter pick-up.





THE AGREEMENT

- ★ Each group is required to sign an agreement with the MTO agreeing to pick up litter over a three year period. In turn the MTO will place a sign at each end of the area adopted, recognizing the group involved in the program.





OTHER TERMS



- ★ Minimum of two times per year. The optimum time for the first pick-up would be late April or early May.
- ★ The pick-up must only be done when there is good visibility, during daylight hours. The pick-up would stop in the event of rain, fog, etc.
- ★ **Long weekends/Statutory Holidays**-Pick-ups are not allowed as there is increased traffic, and garbage will sit longer (unsightly) and encourage people to add their own.





48 HOURS NOTICE

- ★ The Patrol Supervisor/Contractor responsible for your section of the highway should be notified of your pick-up date, 48 hours in advance.





LAWS AND REGULATIONS



- ★ All Persons involved must abide by the laws and regulations of the province. You are not allowed to go on to private property without the permission of the owner, regardless of how great the collection of litter might be.



AGE

★ Participants must be 12 years of age or older. Disregard for this stipulation could mean cancellation of the agreement.





THINK SAFETY



There are a few simple rules worth remembering when it comes to safely working along the highway.

These rules must be reviewed by all volunteers before each clean-up session.



Volunteers Must:

- ★ Receive annual MTO safety training prior to the first pick-up of the year and review safety rules before each clean-up.
- ★ Provide a least 1 adult (19 years or older) supervisor for each 5 workers.
- ★ Always wear an approved safety vest.
- ★ Display the “road work” sign before starting the clean-up.
- ★ Carpool to minimize the number of vehicles at the work site and always disembark from the side adjacent to the ditch.



Volunteers Must: Continued...



- ★ Park parallel to the road and as far off the travelled portion as possible.
- ★ Park vehicles on the same side of the roadway as the volunteers.
- ★ Clean-up one side of the highway at a time and work towards oncoming traffic.
- ★ Drive to the opposite side of the roadway when switching sides.
- ★ Pick-up litter during daylight hours only.
- ★ Flag hazardous and unidentifiable items for pick-up by contract staff.



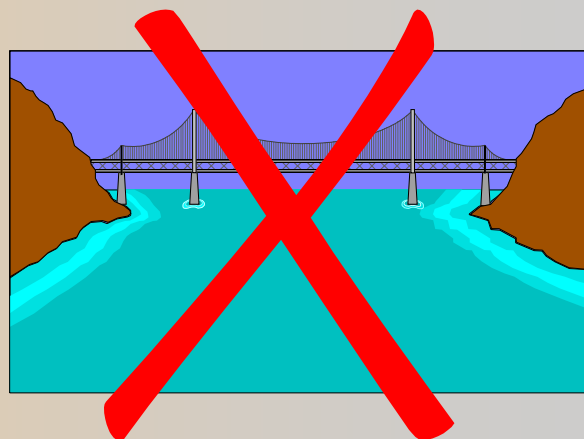
Volunteers Must: Continued...

- ★ Stay clear of any maintenance or construction operations and equipment.
- ★ Stay clear of water hazards.
- ★ Discontinue work in inclement weather.
- ★ Place filled trash bags at the designated pick-up site(s).
- ★ Close the “road work” sign when finished the litter pick-up.



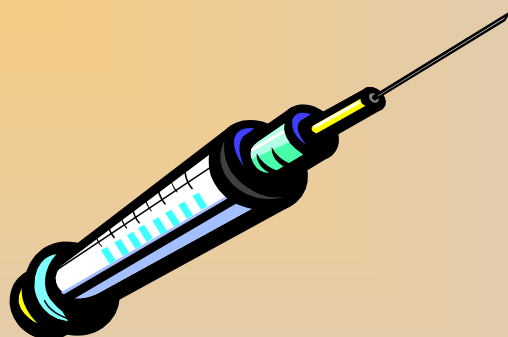
Volunteers Must Not:

- ★ Disembark from vehicles until “road work” sign has been displayed.
- ★ Walk or pick up litter on the pavement, shoulder, or in the median.
- ★ Work on bridges, overpasses, steep ground, or in tunnels.
- ★ Step or jump on trash bags.





Volunteers Must Not: Continued...



- ★ Touch or pick-up hazardous items or any thing that cannot be identified.
- ★ Wear clothing or display material that might distract motorists.
- ★ Use or possess illegal drugs or alcoholic beverages before or during the clean-up.



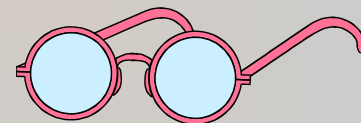
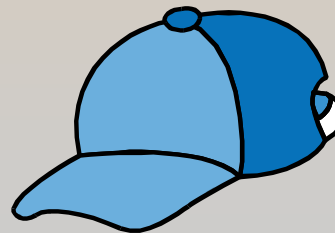
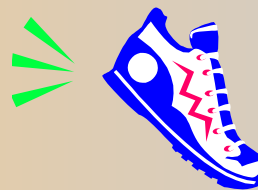
Supervisor's duties

- ★ Ensure required equipment is available
- ★ Review safety procedures with work groups arriving at the site
- ★ If there are multiple groups, make sure each group is headed by a responsible adult
- ★ Line up group to cover area from the shoulder to the edge of right-of-way
- ★ Know what to do in the event of an emergency such as severe cuts
- ★ Know where the nearest hospital is
- ★ Know the physical capabilities of your group, including allergies
- ★ Make sure water is available
- ★ Do not allow the group to walk or work on the travelled portion of the highway



For Your Own Safety

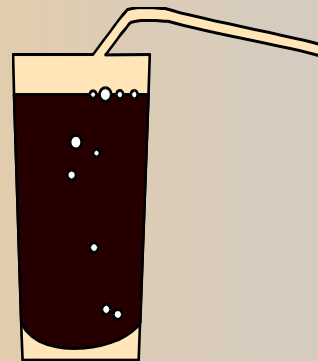
- ★ Stay mentally alert at all times
- ★ Wear protective footwear and gloves
- ★ Wear light-coloured clothing that covers arms and legs.
- ★ Wear a baseball cap or wide-brimmed hat and sun screen lotion.





For Your Own Safety, Continued...

- ★ Drink lots of fluids while you work especially on hot, humid days.
- ★ Be aware of any special needs of fellow volunteers (i.e. medical condition)
- ★ Avoid over-exertion





For Your Own Safety, Continued...

- ★ Stay alert for, and avoid hazardous plants, snakes and stinging insects.
- ★ Keep an adequate supply of flags and trash bags on hand.





Equipment and Other Items Required

- ★ Garbage bags-presently supplied by MTO/contractor, however you can approach businesses about supplying them.
- ★ Water – make sure water is available
- ★ Sun block/Insect repellent
- ★ First Aid Kit – with Band-Aids, compression bandage, antiseptic swabs and tweezers.





Equipment and Other Items

- ★ Flags – small orange flags are provided for marking objects which should not be moved. E.g.. Heavy objects, dead animals
- ★ Signs – signs will be provided recognizing the group/individual. They will be placed at both ends of the adopted section of highway. The “Men Working” sign should be unfolded when pick-up begins and re-folded when pick-up is complete.



Equipment and Other Items

- ★ Orange Safety Cones – Three 20” traffic cones are provided. They are to be placed around your vehicle if you have to park on the shoulder of the highway.
- ★ Safety Vests – One safety vest is required for each worker.

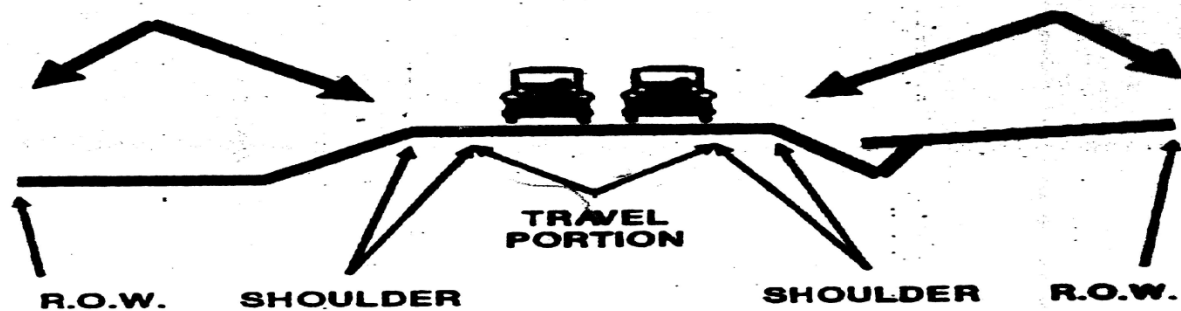




Work Area

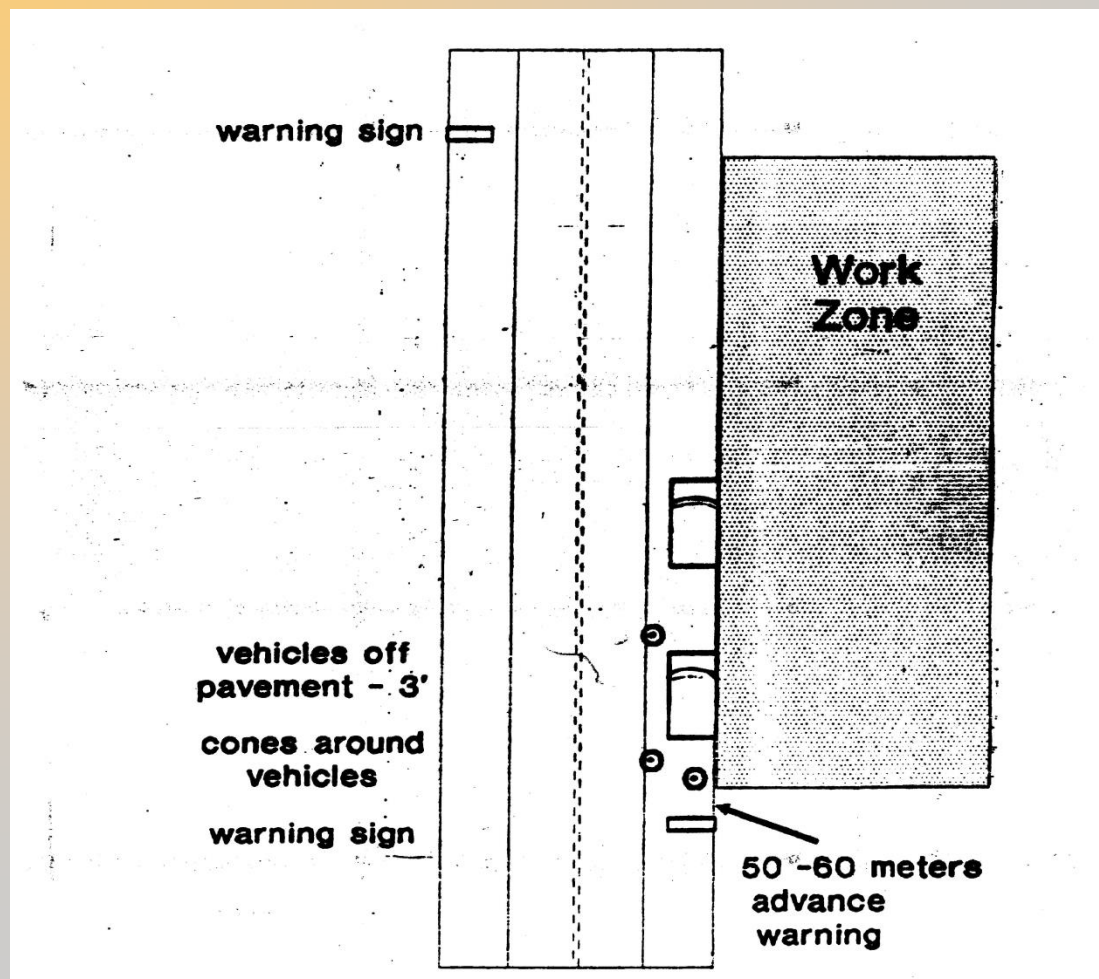
BETWEEN

**Shoulder and Right of Way
Either Side of Highway**





Work Zone





Work Area



- ★ Shall be within the assigned area (fence-line to shoulder)
- ★ Unfold men working signs at both ends
- ★ Park on the same side of the road you intend to work
- ★ Vehicles should be parked at least three feet off the travelled portion of the highway
- ★ Carpool to reduce number of vehicles
- ★ Exit vehicle from right-hand doors, if possible

Do not walk on the pavement

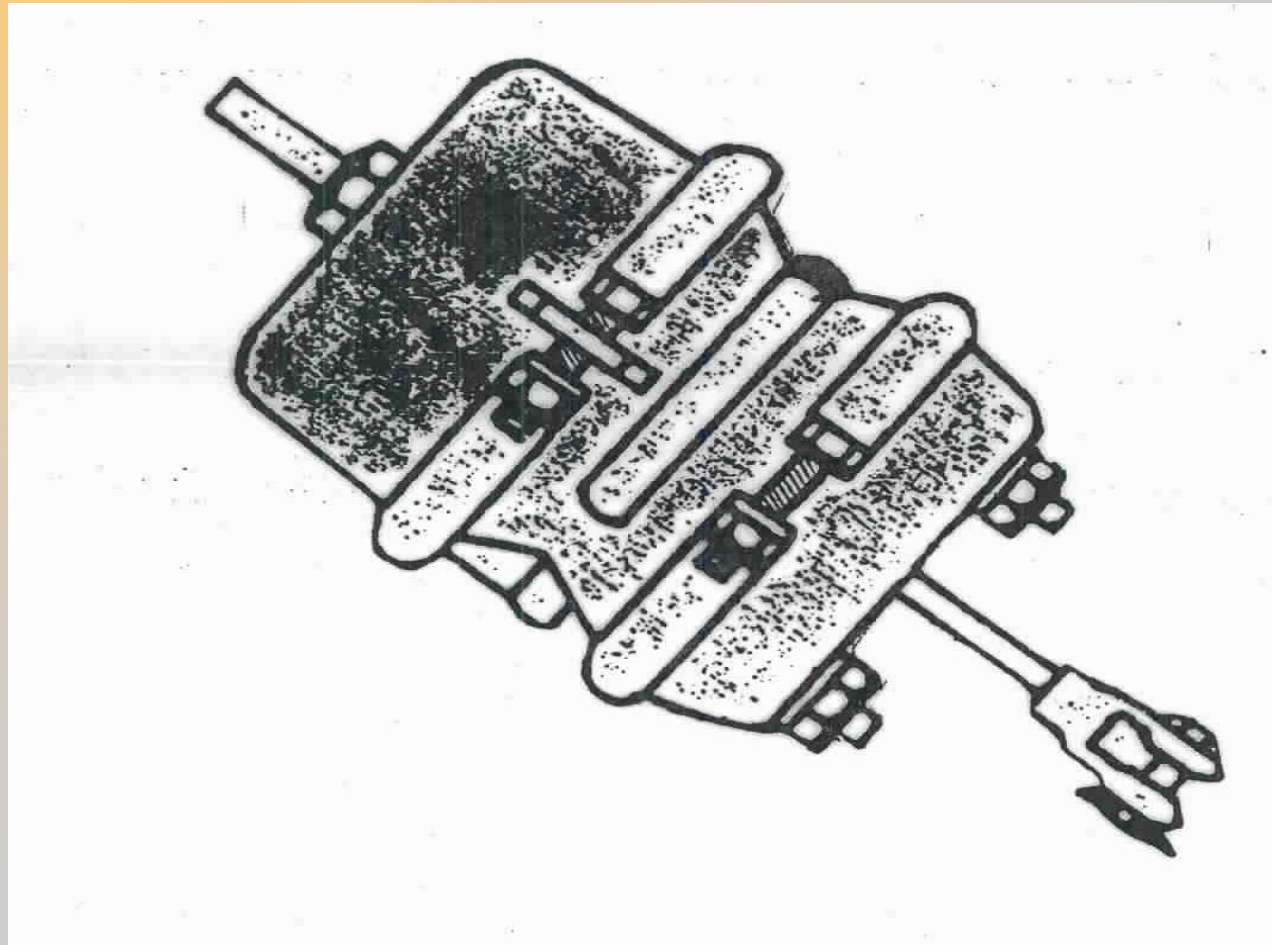


Handling Litter

- ★ **Unknown Items** – if you don't know, don't touch—mark it with a flag
- ★ **Heavy Items** – don't try to lift—flag it
- ★ **Air Brakes** – A round cylinder about 6-8 inches in diameter. Do not touch, move or kick—they are potential bombs. They have an internal spring which is compressed to over 1000 PSI. If the band breaks they will fly apart like a hand grenade. Mark them with several flags.
- ★ **Batteries** – car battery- flag it, flashlight batteries etc. are o.k. to pick up.



Air Brake Cylinder





Handling Litter

- ★ Discarded Needles – Flag them the contractor will have trained people to pick them up. If they are placed in a garbage bag they may puncture a person handling the bag later on.
- ★ Dead Animal – Flag them for burial; do not touch as there is potential for disease.



Handling Trash

- ★ Place the garbage bags at the location agreed upon with the local Patrol Supervisor/Contractor
- ★ Recyclables – most groups sort garbage, separating recyclable plastics, glass and aluminium pop cans and beer bottles, which can generate money for your group or favourite charity.





THE END



THANK YOU

